

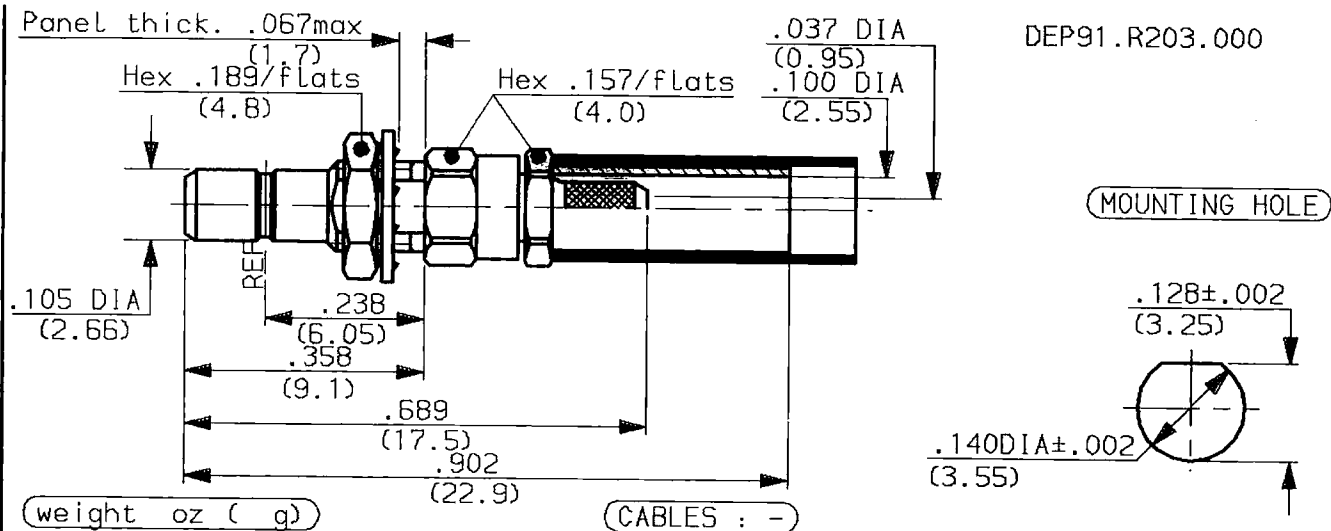
STRAIGHT BULKHEAD JACK  
CRIMP TYPE CABLE 2/50

Issue : 9211

Page

SERIES: SSMB 1 / 2

DEP91.R203.000



CHARACTERISTICS

NOMINAL IMPEDANCE	50 $\Omega$
FREQUENCY RANGE	0-4 GHz
TEMPERATURE RATING	-65/+165 °C
VSWR	1.33 Max
RF INSERTION LOSS	0.30 $\sqrt{F}$ dB Max
VOLTAGE RATING	250 Vrms Max
DIELECTRIC WITHSTANDING VOLTAGE	500 Vrms min
INSULATION RESISTANCE	1000 Mo mini
HERMETIC SEAL	NA cc/s - Atm.cm <sup>3</sup> /s
LEAKAGE (pressurized only)	NA psi - MPa

STANDARDISATION

MIL STD 348A  
CEI 169-19  
CECC 22170

CABLE RETENTION	9.9 Lb mini 45 N
CENTER CONTACT RETENTION	
Axial force - mating end	2.0 Lb mini 8.9 N
Axial force - opposite end	2.0 Lb mini 8.9 N
Torque (Min)	NA Inch.oz - cm.N
RECOMMENDED TORQUES	
Mating	NA Inch.Lb - cm.N
Panel nut	2.2125 Inch.Lb 25 cm.N
Clamp nut	NA Inch.Lb - cm.N

CONSTRUCTION

CONNECTOR PARTS	MATERIALS	FINISH
BODY	BRASS	20 $\mu$ i GOLD
OUTER CONTACT	BRASS	20 $\mu$ i GOLD
CENTER CONTACT	BERYLLIUM COPPER	50 $\mu$ i GOLD
INSULATORS	PTFE	-
BACK BODY	BRASS	20 $\mu$ i GOLD
FERRULE	BRASS	8 $\mu$ i GOLD
HEATSHRINK SLEEVE	POLYOLEFINE	-
-	-	-
-	-	-

ISSUE	REVISION No	DESCRIPTION	BY	DATE
.	.	.	.	.
.	.	.	.	.
.	.	.	.	.

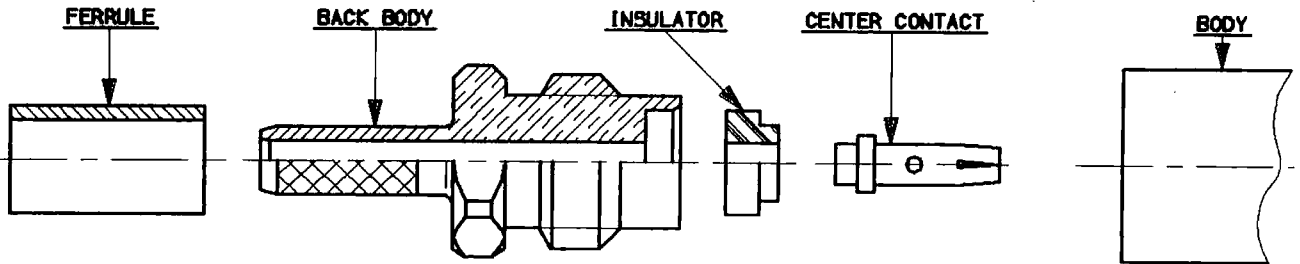
Initiated on 18-JAN-91

The information given here is subject to change without notice. Design changes may be in order to improve the product.



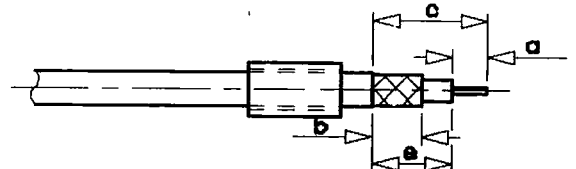
Superseded on

STRAIGHT BULKHEAD JACK  
CRIMP TYPE CABLE 2/50



①

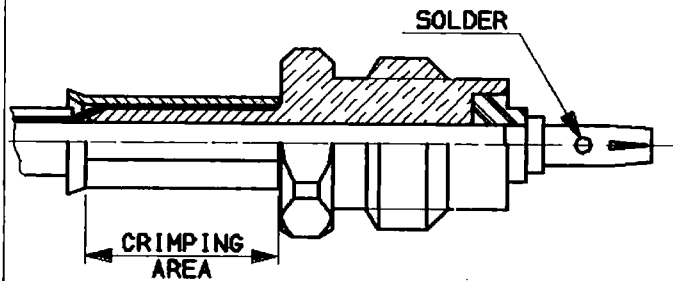
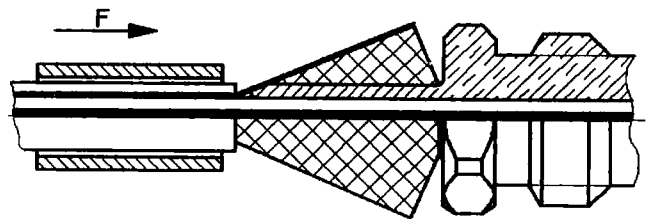
- 1-1 Slide the ferrule onto the cable .
- 1-2 Strip the cable .
- 
- 



Stripping	a	b	c	d	e
Inch	.138	.157	.492	-	.335
mm	3.5	4	12.5	-	8.5

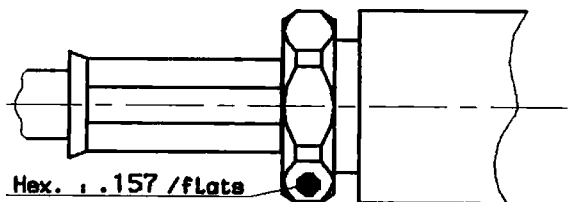
②

- 2-1 Fan the braid .
- 2-2 Slide the back body between dielectric and braid .
- 2-3 Slide the insulator into the back body .
- 2-4 Slide on the centre contact until it bottoms against insulator .
- 2-5 Solder the center contact .
- 2-6 Clean soldering area .
- 2-7 Slide ferrule over the braid ( in direction F )
- 2-8 Crimp ferrule with crimping tool R 282 235 003 (Hex. .105 ) or tool M22520/5-01 + Dies M22520/5- 03



③

- 3-1 Screw sub-assembly into the connector body .  
Recommended coupling torque  
3.15 in. Lb



ISSUE	REVISION No	DESCRIPTION	BY	DATE
.	.	.	.	.
.	.	.	.	.
.	.	.	.	.
.	.	.	.	.

Initiated on 3 OCT 91  
Superseded on -----

The information given here is subject to change without notice. Design changes may be made in order to improve the product.